

# BENCHMARKMF

118 INDUSTRIAL DRIVE  
EDGERTON, OHIO 43517  
PH. (419) 298-1740

## "HOLLOW METAL FRAME ANCHORING"

### GENERAL NOTES

1. THIS PRODUCT HAS BEEN EVALUATED AND IS IN COMPLIANCE WITH THE FLORIDA BUILDING CODE EXCLUDING THE "HIGH VELOCITY HURRICANE ZONE".
2. SEPARATE PRODUCT APPROVALS FOR EACH THERMA-TRU DOOR PRODUCT USED WITH THIS ANCHORING APPROVAL MUST BE SUBMITTED WITH THIS PRODUCT APPROVAL. CONSTRUCTION OF THE ASSEMBLY MUST BE IN ACCORDANCE WITH THE CONSTRUCTION OF THE COMPANION DOOR PRODUCT APPROVAL SUBMITTED.
3. THE DESIGN PRESSURE RATING OF THE TOTAL ASSEMBLY SHALL BE THE LESSER OF THE DP RATING OF THE FRAME ANCHORING SHOWN IN THIS APPROVAL OR THE DP RATING OF THE PRODUCT APPROVAL FOR THE DOOR PRODUCT USED.
4. MAIN MEMBER (BUCK OR STUD) FRAMING IS SPRUCE-PINE-FIR (SG = 0.42) OR BETTER.
5. PRODUCT ANCHORS SHALL BE AS LISTED AND SPACED AS SHOWN ON DETAILS. ANCHOR EMBEDMENT TO BASE MATERIAL SHALL BE BEYOND WALL DRESSING OR STUCCO.
6. THIS FRAME ANCHORING APPROVAL ADDRESSES TRANSFER OF WIND LOADS TO THE MAIN STRUCTURE. THE COMPANION DOOR PRODUCT APPROVAL SUBMITTED MUST BE APPROVED IN THE SAME OR SMALLER SIZE, SAME CONFIGURATION AND FRAME MATERIAL.
7. CONDITIONS NOT COVERED BY THIS DRAWING ARE SUBJECT TO FURTHER ENGINEERING ANALYSIS.

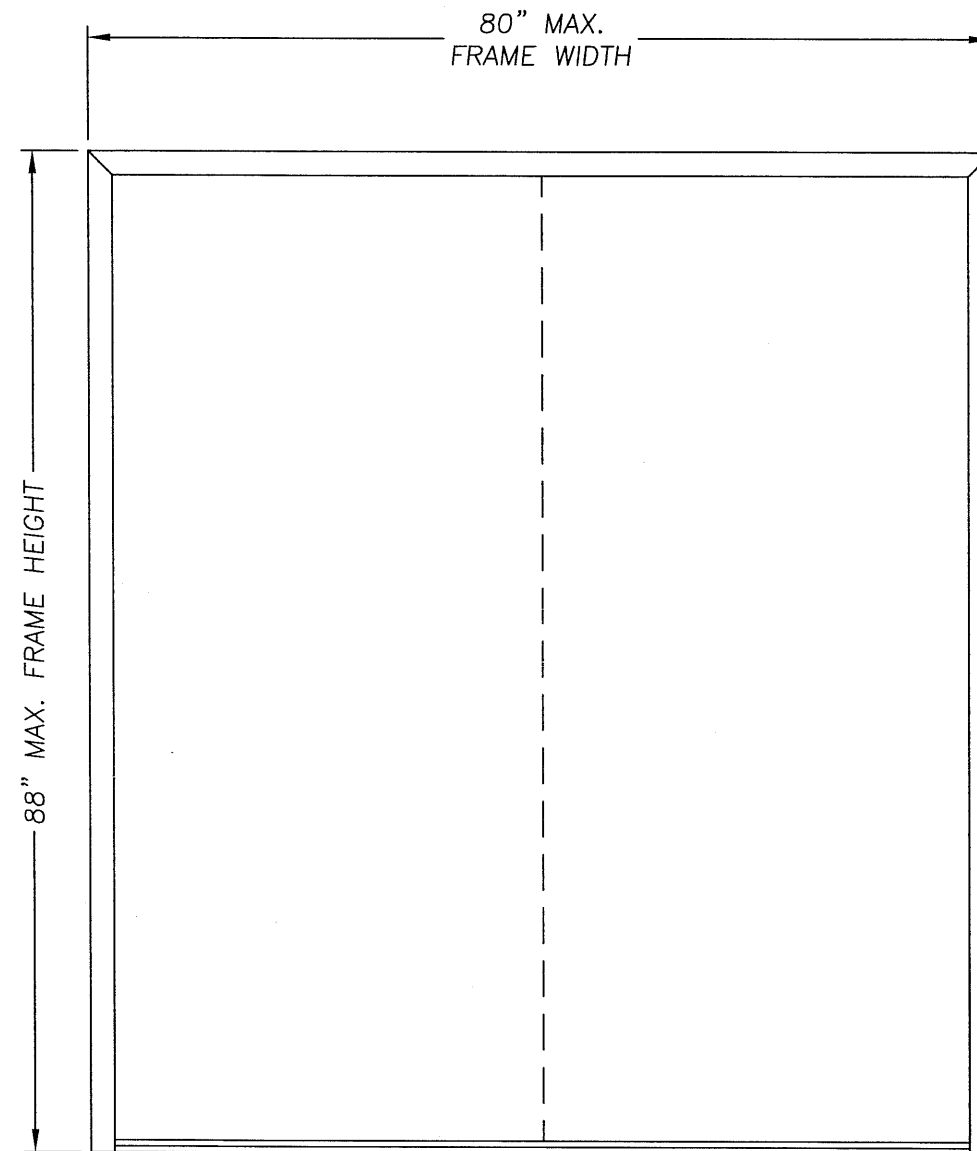
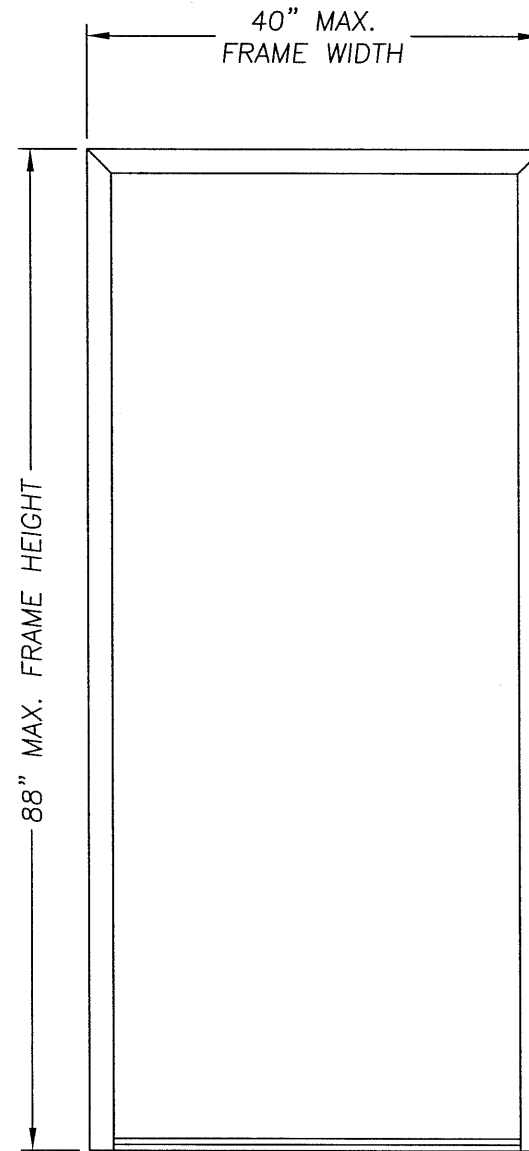


TABLE OF CONTENTS	
SHEET #	DESCRIPTION
1	TYPICAL ELEVATION, DESIGN PRESSURES & GENERAL NOTES
2	CROSS SECTIONS
3	ANCHOR LAYOUT
4	ANCHOR OPTIONS

UNIT TYPE	MAXIMUM OVERALL NOMINAL SIZE	DESIGN PRESSURE	
		POSITIVE	NEGATIVE
HOLLOW FRAME (SINGLE UNIT)	40.00" x 88.00"	+80.0 PSF	-80.0 PSF
HOLLOW FRAME (DOUBLE UNIT)	80.00" x 88.00"	+80.0 PSF	-80.0 PSF

Documents Prepared By:

**RW** BUILDING CONSULTANTS, INC.  
P.O. Box 230 Valrico FL 33595  
Phone No.: 813.659.9497

Florida Board of Professional Engineers  
Certificate Of Authorization No. 9813

*Wendell W. Haney*  
Wendell W. Haney, P.E. No. 54158

PRODUCT: BENCHMARKMF  
HOLLOW METAL FRAME  
SYSTEM ANCHORING  
PART OR ASSEMBLY:

TYPICAL ELEVATION, DESIGN  
PRESSURES & GENERAL NOTES

NO.	DATE	BY	REVISIONS

DATE: 09/22/05

SCALE: N.T.S.

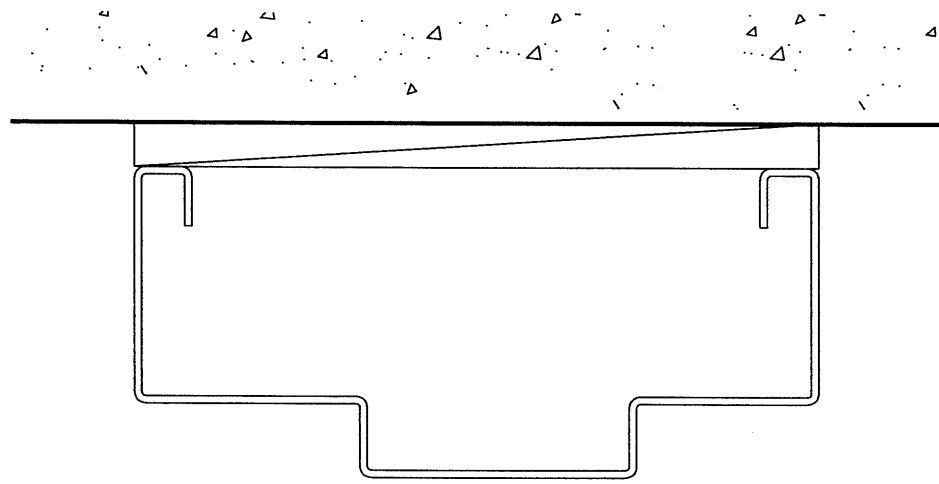
DWG. BY: AEM

CHK. BY: WWH

DRAWING NO.:

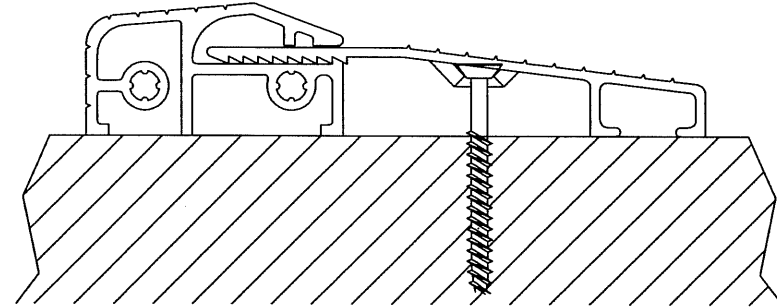
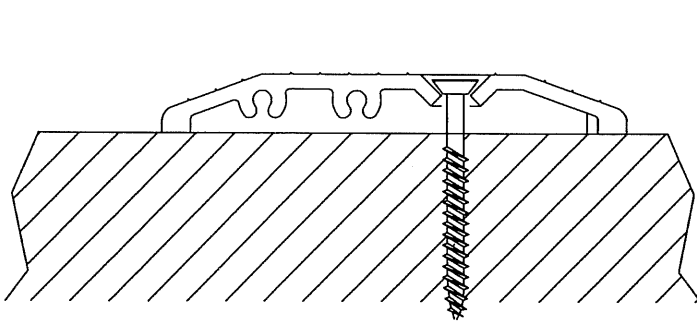
FL-639

SHEET 1 OF 5

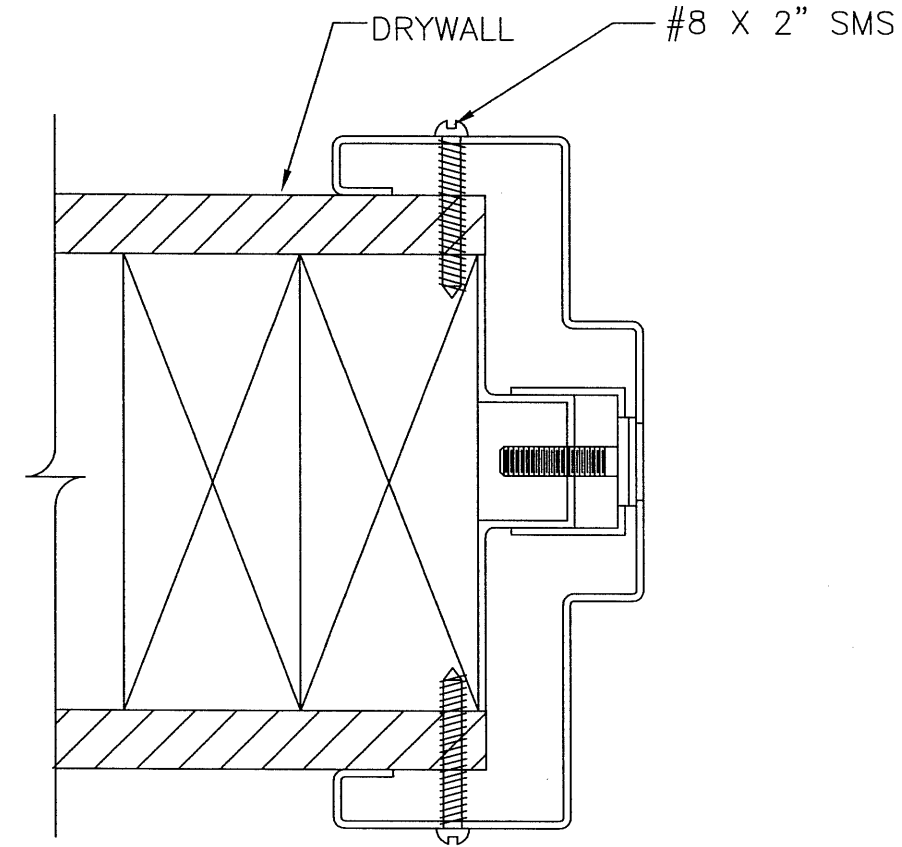


WOOD OR  
MASONRY  
SUBSTRATE  
(TYPICAL)

VERTICAL CROSS SECTION



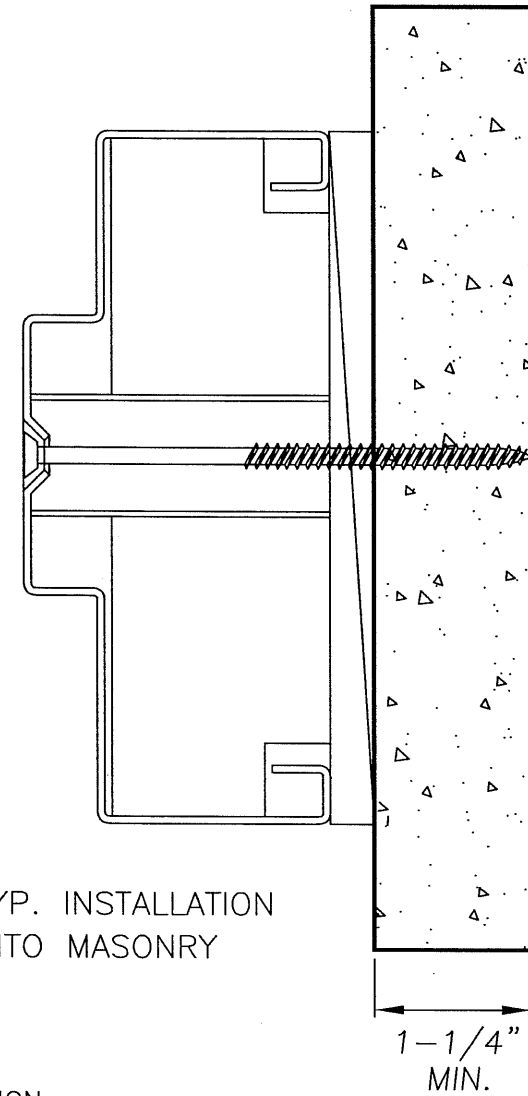
OPTIONAL THRESHOLDS



COMPRESSION ANCHOR  
(STUD WALL APPLICATION)

HORIZONTAL CROSS SECTION

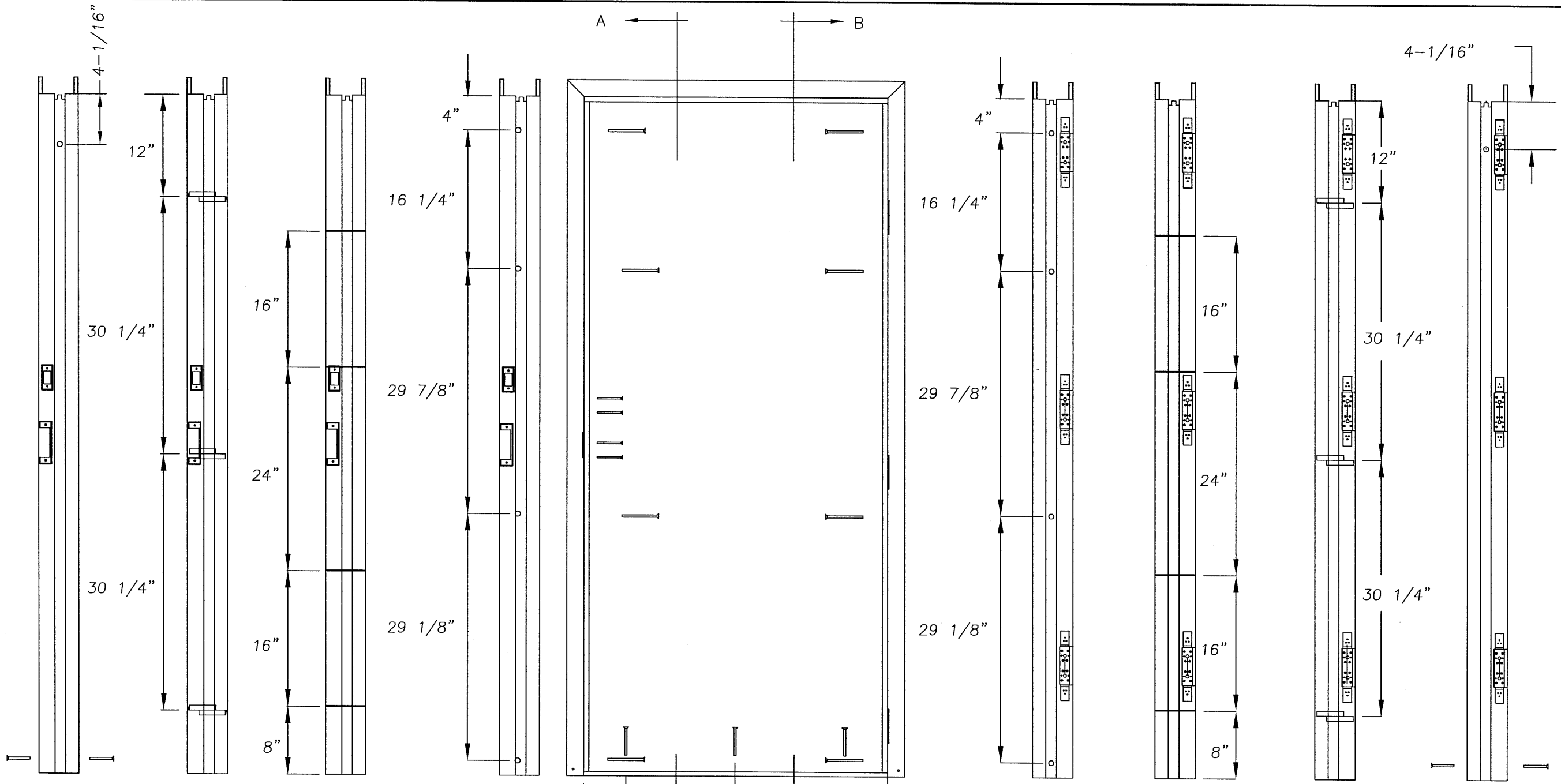
TYP. INSTALLATION  
INTO MASONRY



1-1/4"  
MIN.

Documents Prepared By:		BUILDING CONSULTANTS, INC. P.O. Box 230 Valrico FL, 33595 Phone No.: 813.659.9497 Florida Board of Professional Engineers Certificate Of Authorization No. 9813 <i>Wendell W. Haney, P.E. No. 54158</i>	
PRODUCT:	BENCHMARKMF HOLLOW METAL FRAME SYSTEM ANCHORING	PART OR ASSEMBLY:	CROSS SECTIONS
NO.	DATE	BY	REVISIONS
DATE: 09/22/05		SCALE: N.T.S.	
DWG. BY: AEM		CHK. BY: WWH	
DRAWING NO.:		FL-639	
SHEET 2 OF 5			

R:\PROJ 650 - 800\PF800\52666.INFL-639-3.DWG



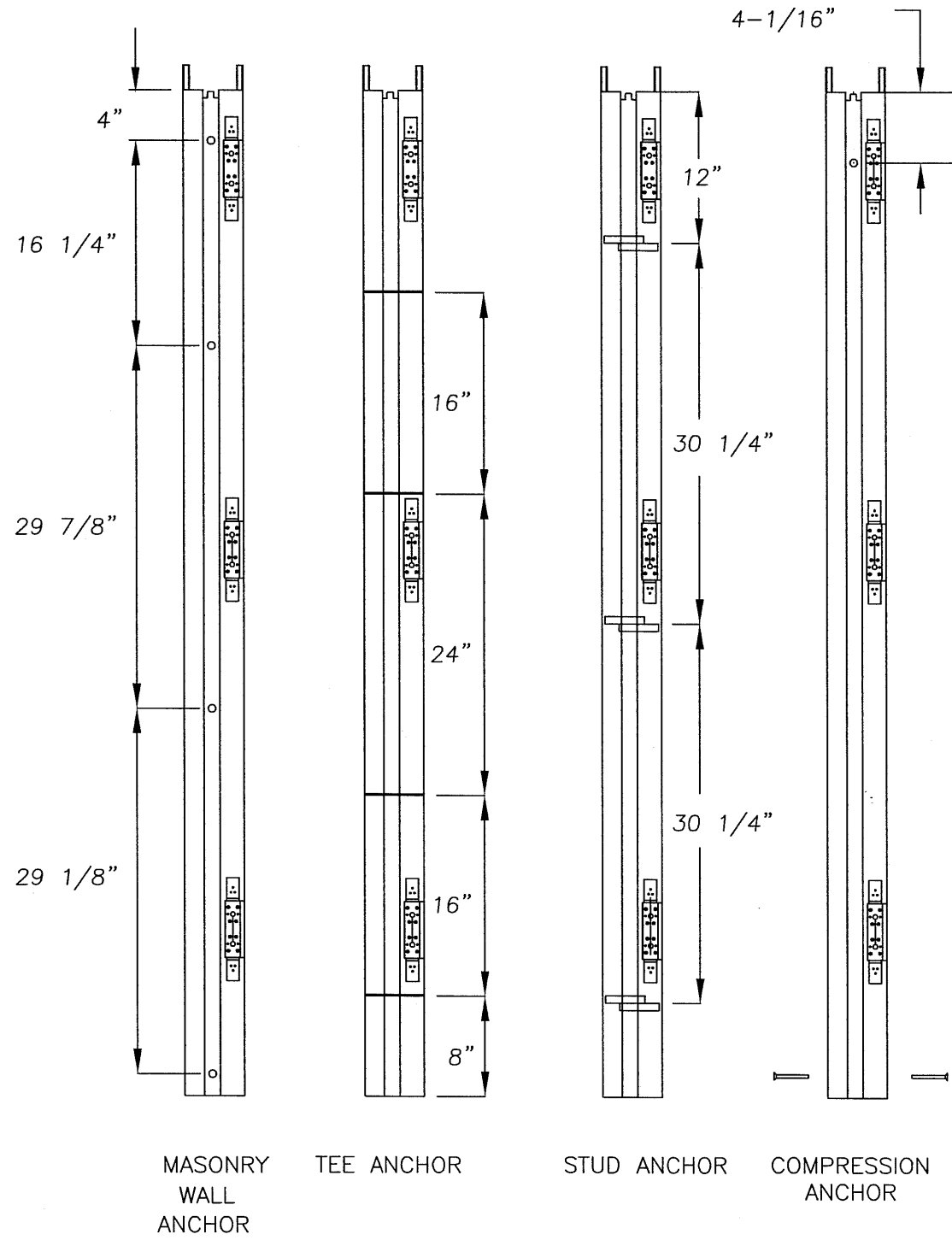
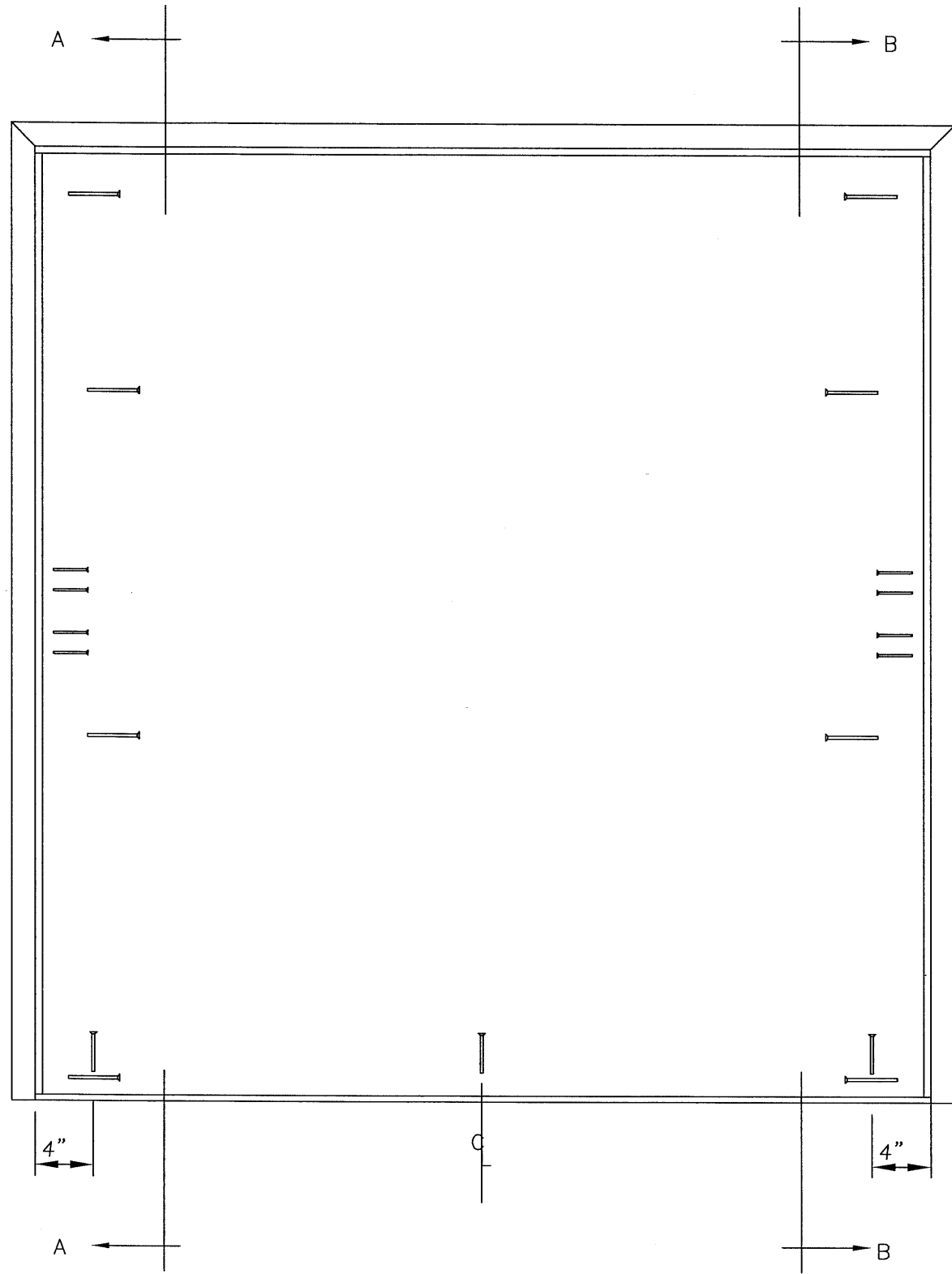
COMPRESSION ANCHOR    STUD ANCHOR    TEE ANCHOR    MASONRY WALL ANCHOR    MASONRY WALL ANCHOR    TEE ANCHOR    STUD ANCHOR    COMPRESSION ANCHOR

Documents Prepared By: **RW** BUILDING CONSULTANTS, INC.  
P.O. Box 230 Valrico FL 33595  
Phone No.: 813.659.9197  
Florida Board of Professional Engineers  
Certificate Of Authorization No. 9813  
*Wendell W. Hgney*  
Wendell W. Hgney, P.E. No. 54158

PRODUCT: BENCHMARKMF  
HOLLOW METAL FRAME  
SYSTEM ANCHORING  
PART OR ASSEMBLY: ANCHOR LAYOUT

NO.	DATE	BY	REVISIONS

DATE: 09/22/05  
SCALE: N.T.S.  
DWG. BY: AEM  
CHK. BY: WWH  
DRAWING NO.: FL-639  
SHEET 3 OF 5

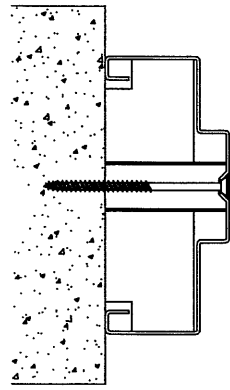


Documents Prepared By:  
**RW** BUILDING CONSULTANTS, INC.  
 P.O. Box 230 Valrico FL, 33595  
 Phone No.: 813.659.9197  
 Florida Board of Professional Engineers  
 Certificate Of Authorization No. 9813  
*Wendell W. Hapey*  
 Wendell W. Hapey, P.E. (No. 54156)

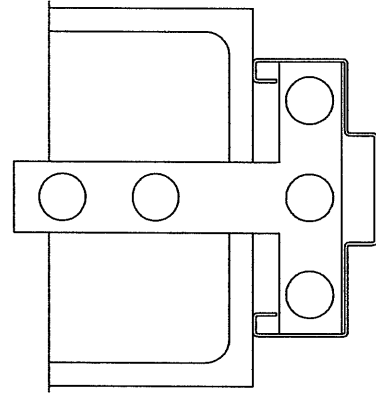
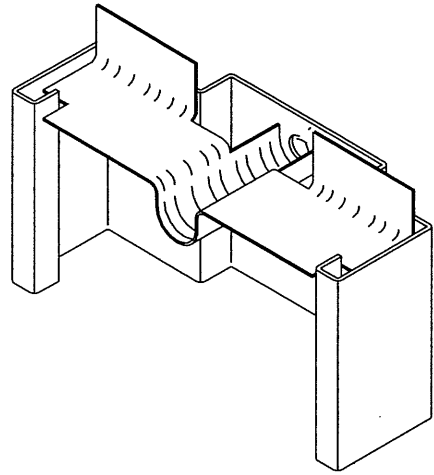
PRODUCT: BENCHMARKMF  
 HOLLOW METAL FRAME  
 SYSTEM ANCHORING  
 PART OR ASSEMBLY: ANCHOR LAYOUT

NO.	DATE	BY	REVISIONS

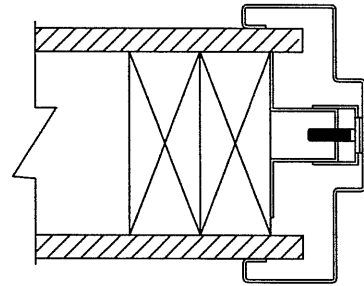
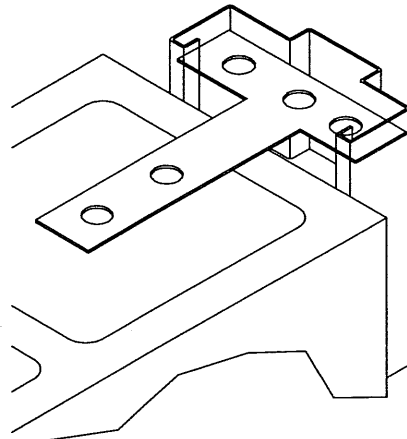
DATE: 09/22/05  
 SCALE: N.T.S.  
 DWG. BY: AEM  
 CHK. BY: WWH  
 DRAWING NO.: FL-639  
 SHEET 4 OF 5



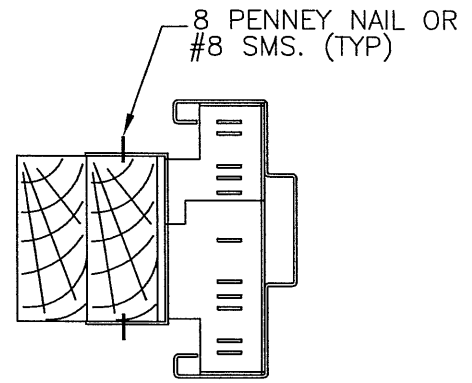
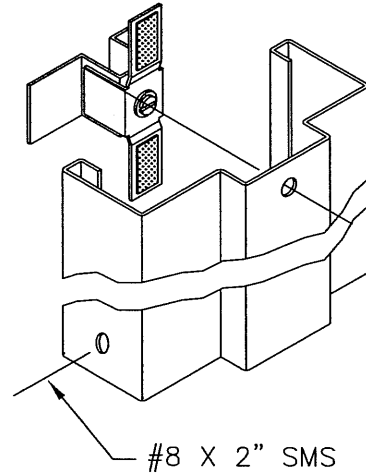
MASONRY WALL ANCHOR



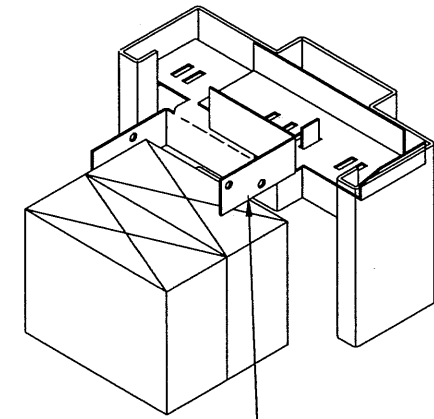
MASONRY TEE ANCHOR



COMPRESSION ANCHOR



METAL STUD ANCHOR



TABS TO BE FIELD CUT WHEN ANCHOR USED FOR METAL STUD CONSTRUCTION

Documents Prepared By:  
**RW** BUILDING CONSULTANTS, INC.  
 P.O. Box 230 Valrico FL, 33595  
 Phone No.: 813.659.9197  
 Florida Board of Professional Engineers  
 Certificate Of Authorization No. 9813  
*Wendell W. Hange* 9/23/05  
 Wendell W. Hange, P.E. No. 54158

PRODUCT: BENCHMARKMF  
 HOLLOW METAL FRAME  
 SYSTEM ANCHORING  
 PART OR ASSEMBLY:  
 ANCHOR OPTIONS

NO.	DATE	BY	REVISIONS

DATE: 09/22/05  
 SCALE: N.T.S.  
 DWG. BY: AEM  
 CHK. BY: WWH  
 DRAWING NO.: FL-639  
 SHEET 5 OF 5