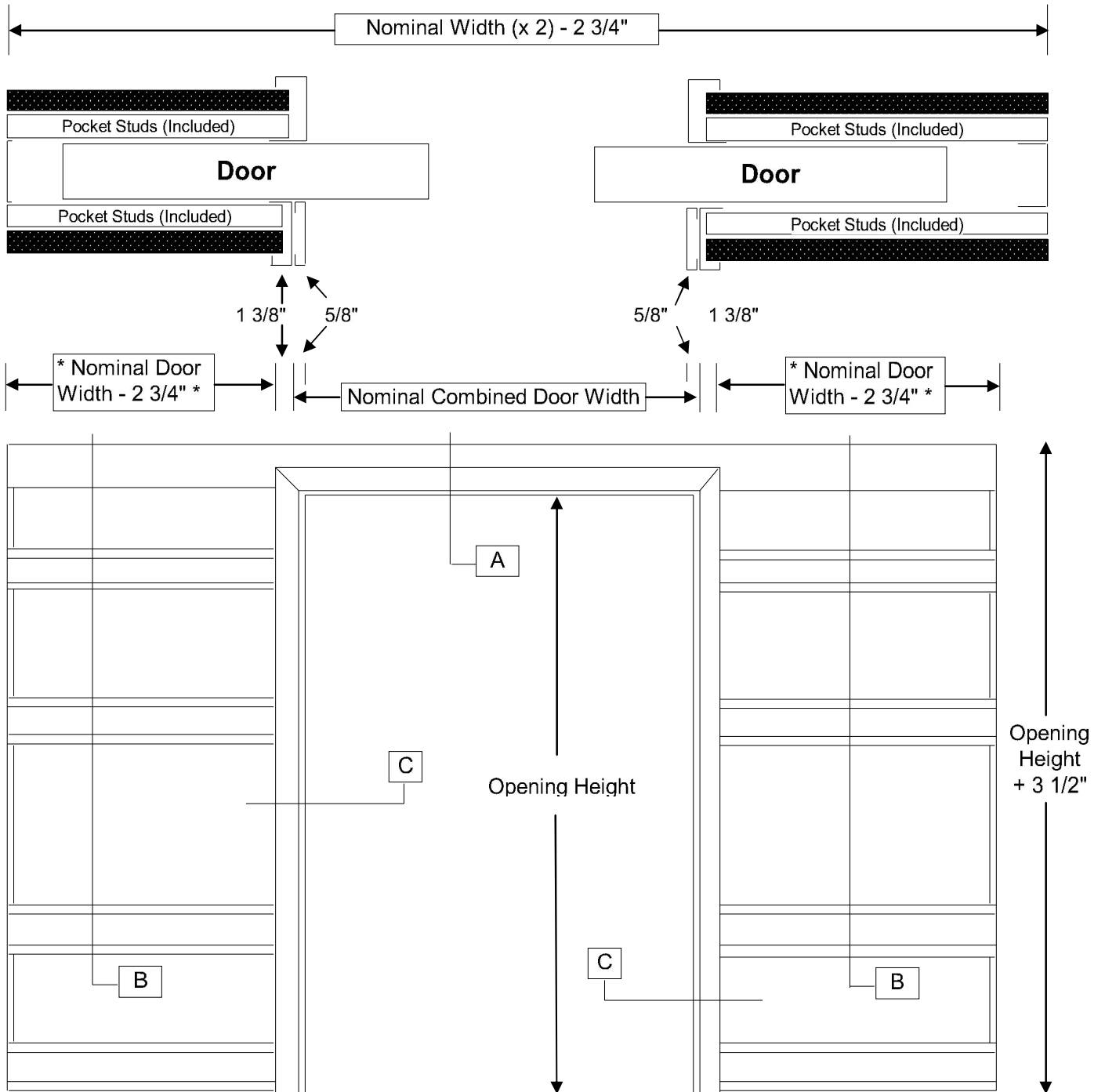
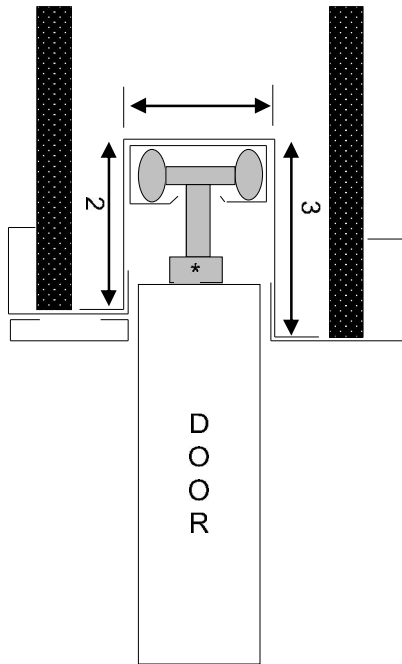


Welded Bi-Parting Frame (sub-frame included)



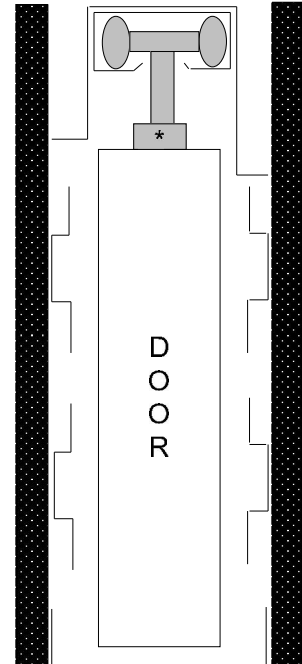
* Based on Net Door = Nominal Door - 1/4"

Welded Bi-Parting Frame (sub-frame included)

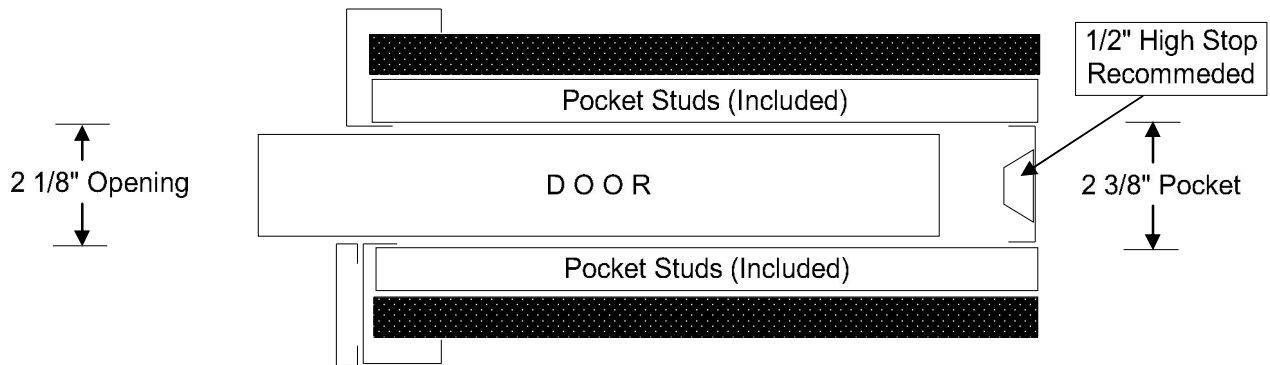


A - Head Detail

Pocket Track and Hardware
Available from HMF Express

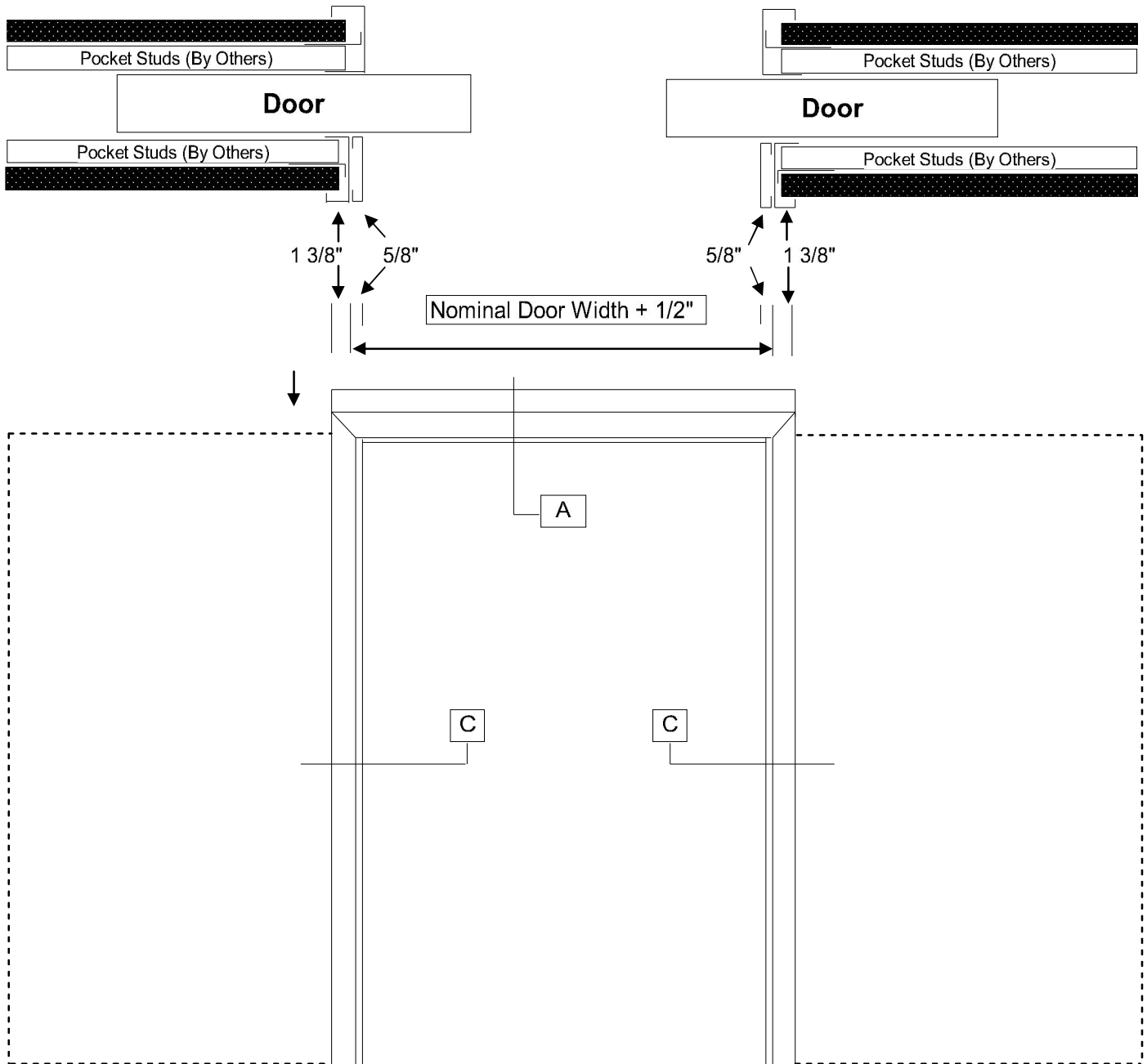


B - Pocket Detail Side View

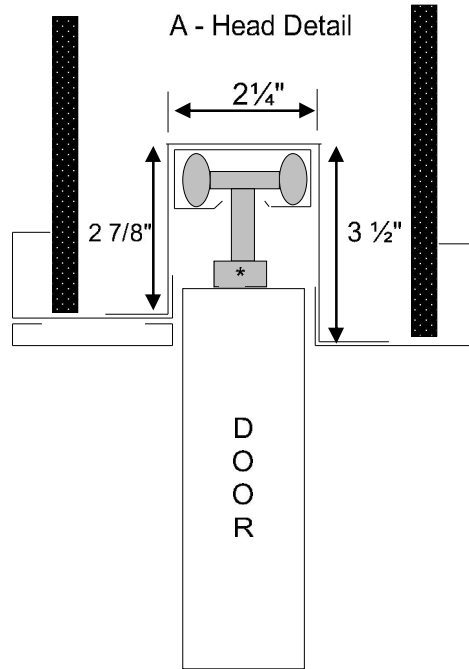


C - Pocket / Receiver Detail

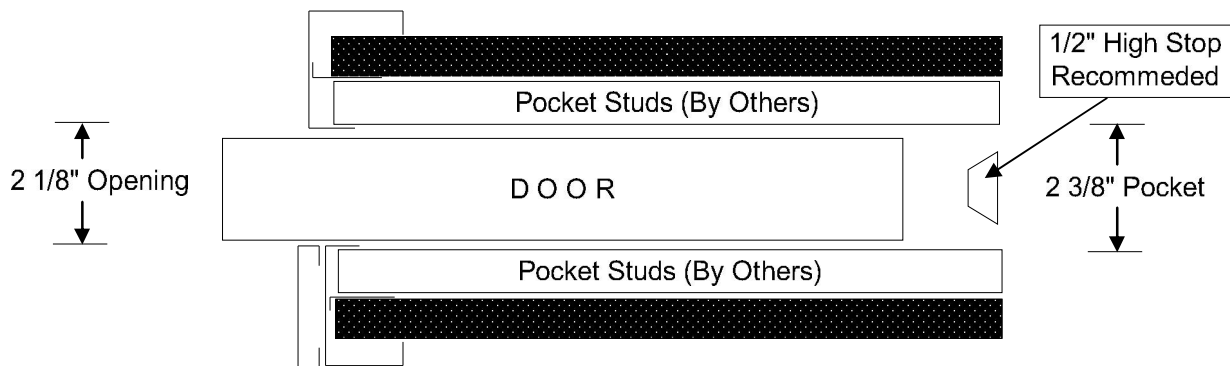
Welded Bi-Parting Frame (sub-frame by others)



Welded Bi-Parting Frame (sub-frame by others)



*Pocket Track and Hardware available from HMF Express.
Pocket Wall Stud Kit also available.



C-Receiver / Pocket Detail